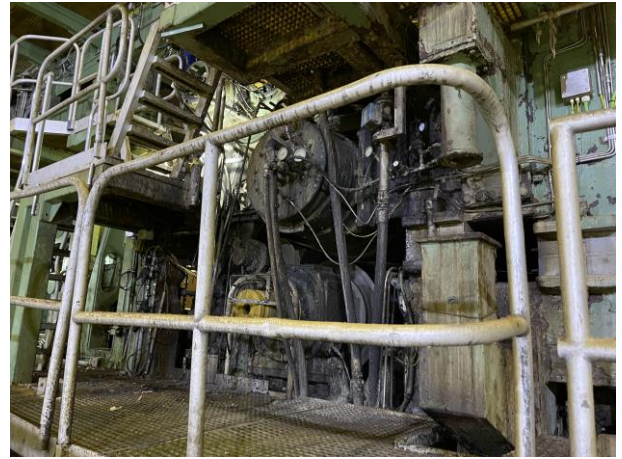




COMPLETE PRESS SECTION FOR PAPER MACHINE 7.000 MM



- Built by Beloit year 1989
- Paper width 6.500 mm
- Kraft liner from 115 – 300 gsm
- Speed 1.000 m/min
- Composed by:
 - Bi-Vent press section with 1st NIP 80 kN/m and 2nd NIP 105 kN/m
 - Extended Nip press 1.050 kN/m
 - Included rolls, frames, hydraulic group, ...
- Working until September 2023

