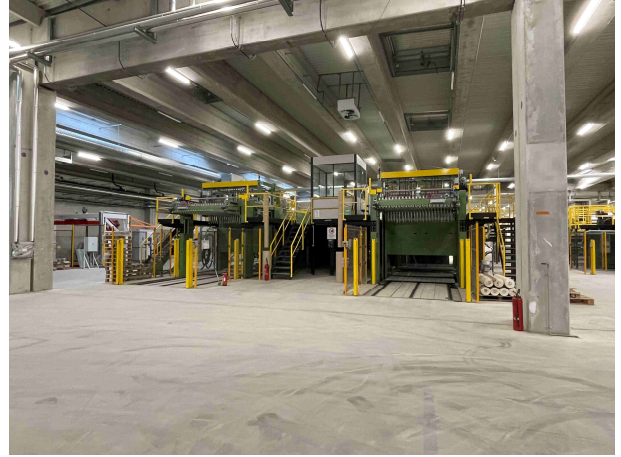


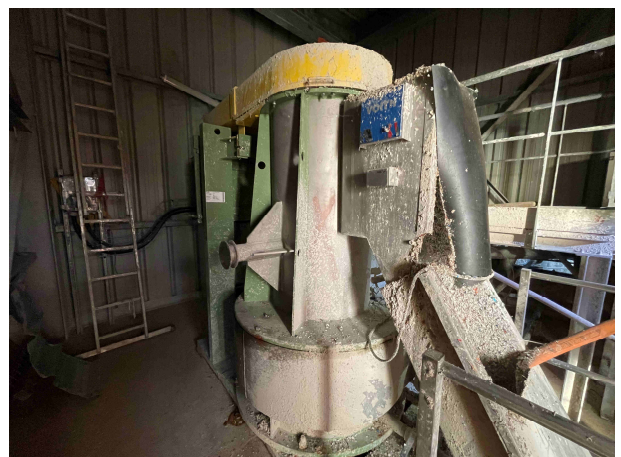


## COMPLETE COATED BOARD FOR SALES



### TECHNICAL INFORMATION

- Capacity 120.000 T per year
- Coated boards from 250 – 460 gr/m<sup>2</sup>
- Manufacturer: Voith, Bellmer, Allimand
- Year of construction: 1962
- Major rebuilds:
  - 2015 Web inspection System
  - **2016 Replacement of press section, including a shoe press**
  - **2023 new rewinder max. speed 1800 m/min**
  - **2023 new sheeter center**
- Speed: max 400 m/ min
- Capacity 17,7 Tph (424 Tpd)
- Working width: 3180 mm
- Machine stopped and erected



## 1. STOCK PREPARATION LINES

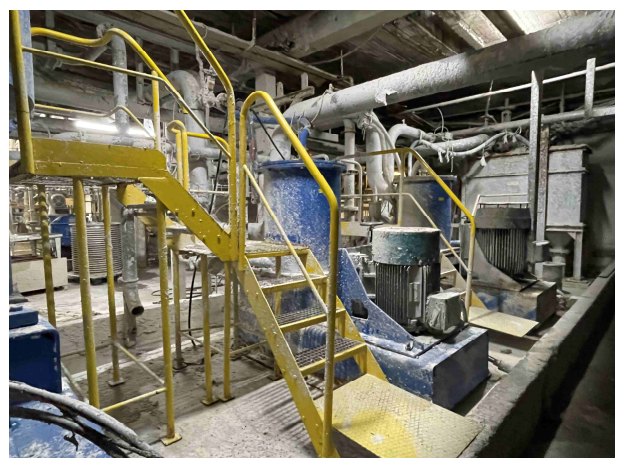
- **INTERIOR LINE 14 T/h dry**
  - Pulper Black Clawson 39 m3 power installed 350 hp
  - HDC Liquid Cyclone 14 ½
  - Selectifier Black Clawson 1979 holes 3 mm power 110 Kw
  - 2 x Black Clawson Hydradenser 2B16
  - Reject press Kufferath Akupress A500 capacity 25 Tpd
  - Voith combisorter year 2022 CSM12B
  - Voith fiberfraktor year 2010 GR2 capacity 380 Tpd



- **LONG FIBER LINE INTERNAL PURIFICATION 10 T/h dry**
  - Voith turbosorter year 1979
  - Low density cleaner section Celleco 1987
  - Black Clawson Selectifier year 1979
  - Drum thickeners Finck
- **TOP LINE 9 T/h dry**
  - Pulper Voith AP32 power 355 kW
- **MECHANICAL PULP LINE**
  - Pulper Voith VS 32 m3 power installed 270 hp
- **WHITE LINE**
  - Pulper Voith VS 32 m3 power installed 270 hp
  - Andritz Moduscreen
  - Voith Sulzer refiner twinflo TF 1E power 315 kW



- **UNDER TOP LINE 9 T/h**
  - Pulper Black Clawson S60" power 280 kW
  - Black Clawson Selectifier 24PH holes 2 mm 110 kW
  - Black Clawson Selectifier 36PS slots 0,25 mm 110 kW
  - Black Clawson Selectifier 24PH slots 0,25 mm 55 kW
  - Low density cleaner section 5 stages Celleco
  - Fibernet BC 3 power 22 kW
  - Hydradenser thickener
  
- **BACK SIDE LINE 6T/h dry**
  - Lamort Centrifiner 600 power 250 kW
  - Lamort CH7 year 1990
  - Lamort CH3 year 1990
  - Complete Krima dispersion unit for 100 Tpd
  
- **DEINKING LINE (OUT OF SERVICE)**
  - Helical pulper Lamort 12 m3
  - Pear Lamort size PV2
  - Liquid Cyclone
  - LDC section Celleco
  - Lamort SPN10 with slotted basket 0,12 mm
  - Washer DNT
  - Hedemora filter disc
  - Sudor press screw
  - Frotapulper
  - Black Clawson hydradenser



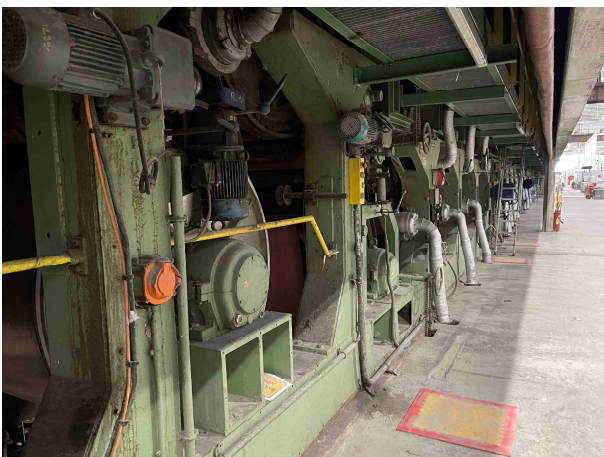
## 2. COATED BOARD MACHINE

- Width 3.180 mm
- Speed maximum 320 m/min (mechanical speed 400 m/min)
- Average production 17,7 Tph



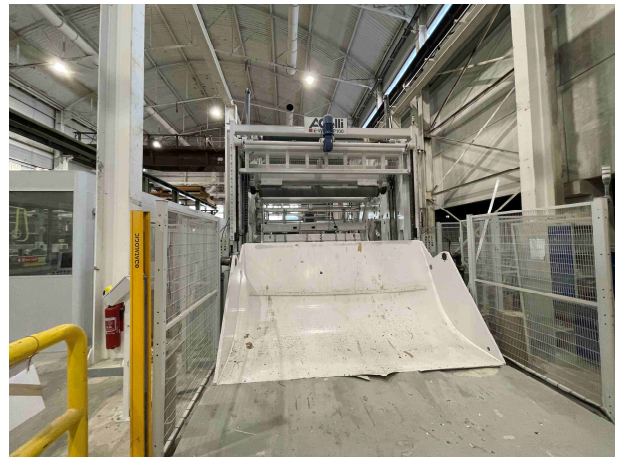
Composed by:

- 7 Voith vat formers diameter 1.250 mm type kurzformer
- 1<sup>st</sup> press suction section overhauled by Bellmer year 2021
- 2<sup>nd</sup> press section overhauled by Allimand
- 3<sup>rd</sup> press Allimand shoe press year 2017
- Reverse press Voith
- Dryer section composed by 72 cans diameter 1.500 mm press work 3 and 5 bars
- Yankee dryer diameter 4.500 mm and 3 bars
- Size press
- Heat calendar Kusters





- **Online coating section composed by:**
  - 2 x Back side Allibe air knife
  - Top layer 1 Beloit
  - Top layer 2 Jagenberg Combiblade
  - Back side
- Automatic pope reel
- Sectional drive
- Nash vacuum line
- Broke pulpers under machine
- New rewinder 1.800 m/min year 2023
- 2023 reel splitter
- Complete water treatment maximum flow 490 m<sup>3</sup>/h for 4 hours
- 50 T/h gas boiler Babcock



### 3. CONVERTING AND SHEETER PLANT (OPTIONAL)

- Sheeter 1<sup>st</sup> Milltex width 2.500 mm year 2023 capacity 110 Tpd
- Sheeter 2<sup>nd</sup> Milltex width 2.500 mm year 2023 capacity 110 Tpd
- Sheeter 3<sup>rd</sup> Milltex width 1.800 mm year 2023 capacity 70 Tpd
- Pallet wrapping line Bocedi year 2023
- Reel wrapping line FIS year 2023
- Pallet inverter and exchanger Topy year 2023
- Sample cutter Heidelberg year 2024
- Conveyors year 2023
- Bale press BOA year 2023

