



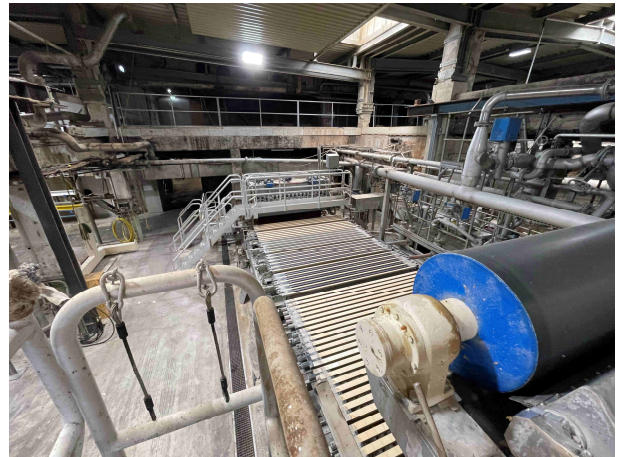
## 2 WIRES PAPER MACHINE 5 FOR SALES



<b>Year manufacturer</b>	Diverse -1961
<b>Modernization</b>	Dörries -1980 Valmet -1999 (General overhaul)
<b>Basis weight range (g/m²)</b>	115 -240
<b>Paper Types</b>	Liner, (Ice)Wave, Kraft Top
<b>Max. speed (m/min)</b>	650 m/min
<b>Max. width (mm) –net</b>	2500
<b>Annual capacity (to)</b>	95.000
<b>Headbox Types</b>	Perforated rollers headbox
<b>Press Configuration</b>	2 compact roller presses + shoe press
<b>Drought by press %</b>	50%
<b>Number of cylinders in the pre-drying section</b>	29
<b>Number of cylinders post-drying section</b>	14
<b>Surface finishing</b>	Glue press
<b>Calander</b>	--
<b>Quality Control System</b>	Metso paper map
<b>Machine stopped may 2024</b>	

### Composed by:

Valmet head box on stainless steel with perforate rolls and cantilever fourdrinier with ceramic dewatering elements IBS with foils and vacuum foils breast roll diam 570 mm  
Superior layer head box Valmet with perforate rolls and complete superior fourdrinier on ceramic and cantilever with breast roll 570 mm  
Transfer roll diameter 800 mm  
Couch roll diameter 854 mm and pick roll diameter 640 mm  
Binip press section Valmet superior roll diameter 910 mm, central rolls suction diameter 894 mm and third roll diameter 600 mm on stainless steel  
Shoe press Valmet diameter 1.300 and 1.250 mm



Dryer section composed by:

11 dryer cylinders diameter 1.250 mm and 1 cylinder diameter 1.500 mm press work 3 bars

14 dryers cylinders diameter 1.830 mm and press work 6 bars

Valmet size press with diameter of the rolls 1.000 mm and 990 mm on stainless steel frames

Last dryer section after the size press composed by:

14 dryers cylinders diameter 1.500 mm and press work 5 bars

Complete close hood and DC sectional drive, also rolls guides and stretchers

Complete Valmet pope reel for a diameter maximum 2.800 mm and spools diameter 400 mm with automatic spool changer

Complete Jagenberg rewinder Varistep for a speed maximum 1.800 m/min

The machine included:

- Complete vacuum line Nash
- Complete Approach flow Voith with Sulzer pumps
- BVG starch preparation line
- Broke pulper
- Regulation and control
- Spare parts



consultoría de  
tecnologías papeleras

**Consultoría de Tecnologías Papeleras, s.l.**

Rambla Salvador Samà, 95, 2º 1ª

08800-Vilanova i la Geltrú

ESPAÑA

Teléfono 93 815 99 20

[www.ctpaper.com](http://www.ctpaper.com)

