



2 WIRES PAPER MACHINE 7 FOR SALES



Manufacturer	Valmet -2000
Modernization	-
Basis weight range (g/m²)	80-175
Paper Types	Liner, (ICE)Wave, Kraft Top
Max. speed (m/min)	1100 m/min
max. width (mm) –net	2500
Annual capacity (to)	150.000
Headbox Types	High turbulence headbox
Press Configuration	2 compact roller presses + shoe press
Drought by press %	50%
Number of cylinders in the pre-drying section	33
Number of cylinders post-drying section	19
Surface finishing	Film Press
Kalander	--
Quality Control System	Metso paper map

Composed by:

Valmet high turbulence head box on stainless steel and cantilever fourdriner with ceramic dewatering elements IBS with edge control, foils and vacuum foils breast roll diam 570 mm

Superior layer head box Valmet high turbulence and complete superior fourdriner on ceramic and cantilever with breast roll 570 mm

Transfer roll diameter 800 mm

Couch roll diameter 854 mm and pick roll diameter 640 mm

Binip press section Valmet superior roll diameter 910 mm, central rolls suction diameter 894 mm and third roll diameter 600 mm on stainless steel

Shoe press Valmet diameter 1.300 and 1.250 mm



Dryer section composed by:

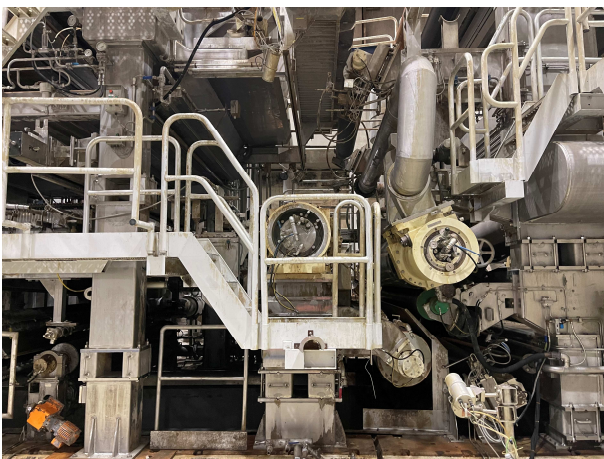
1st dryer section 9 dryers diameter 1.830 mm and 7 bars press and 8 dryers diameter 1.500 mm and press 7 bars

2nd dryer section 24 dryers diameter 1.830 mm and press 7 bars

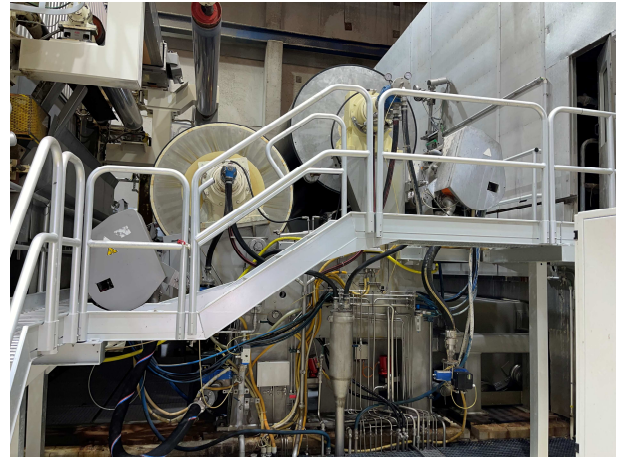
Complete film press Valmet on stainless steel

3rd dryer section after film press 2 chrome dryers and 18 dryers diameter 1.830 mm and press 7 bars

Complete close hood Voith 2024 and DC sectional drive, also rolls guides and stretchers



Complete Valmet pope reel for a diameter maximum 3.000 mm and spools diameter 410 mm with automatic spool changer



Complete Jagenberg rewinder Variflex for a speed maximum 1.800 m/min

The machine included:

- Complete vacuum line Nash
- Complete Approach flow Voith with Sulzer pumps
- BVG starch preparation line
- Broke pulper
- Regulation and control
- Spare parts

